

SOUTHEASTERN UNIVERSITY OF SRI LANKA

THIRD EXAMINATION IN BACHELOR OF BUSINESS ADMINISTRATION AND COMMERCE  
EXAMINATION 2009/2010

SEMESTER – I, AUGUST 2011

MIS 3103 – VISUAL PROGRAMMING

Answer All Questions

Duration: 03 Hours

**01.**

- a) What is Data Type? Write notes on the following data types with reference to Visual Basic 2010
- i. Char
  - ii. Decimal
  - iii. Integer
  - iv. Float
- (10 Marks)
- b) Differentiate Anchoring and Docking. (05 Marks)
- c) Why do we use Arrays in programming? What types of arrays are available? (05 Marks)

**(Total: 20 Marks)**

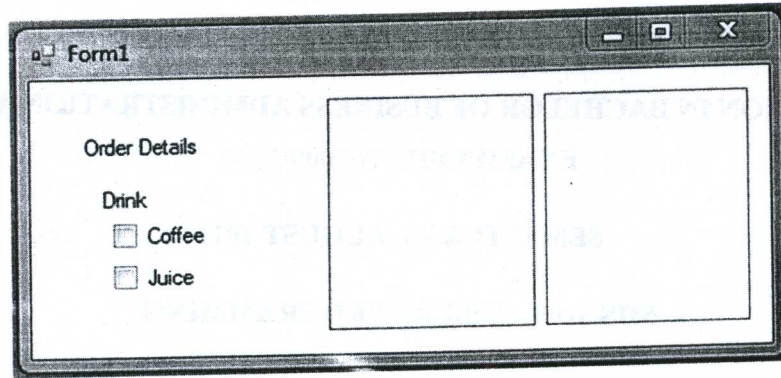
**02.**

- a) List out the 11 steps for developing a Visual Basic .NET Application. (14 Marks)
- b) What are MDI and SDI forms explain with example. (06 Marks)

**(Total: 20 Marks)**

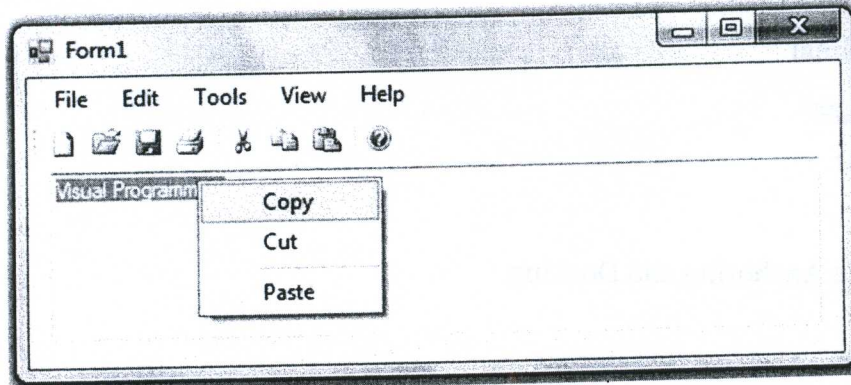
**03.**

- a) Write down the steps to create Login Form and About Box Form. (04 Marks)
- b) Assume you have two jpg files named coffee.jpg and Juice.jpg in C Drive and under Images folder Write a VB program to display the specific picture if the user makes check-in the particular check box.



(07 Marks)

- c) Write down the steps to develop a simple Text Editor program as shown following using the controls such as RichTextBox, MenuStrip, and ToolStrip, ContextMenu etc available in MS-Visual Studio 2010. Each menu command should have an image and shortcut keys assigned. (You can use Standard Items options from the relevant tags available for each strips).



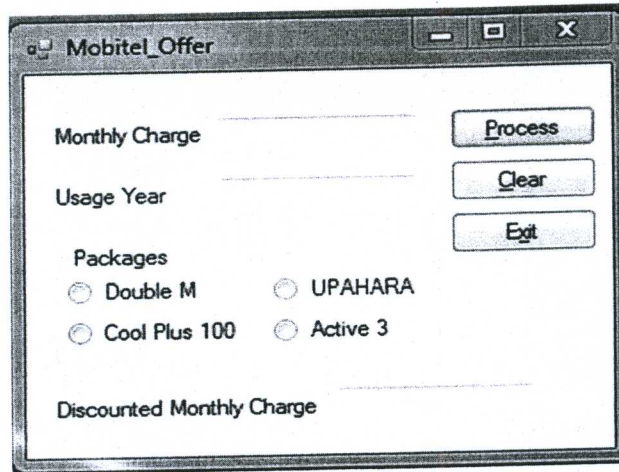
(09 Marks)

(Total: 20 Marks)

04.

- a) The Board of Directors of ABC Mobile Ltd has decided to deduct the total monthly charge of the postpaid customers depending on their package and usage as shown below.

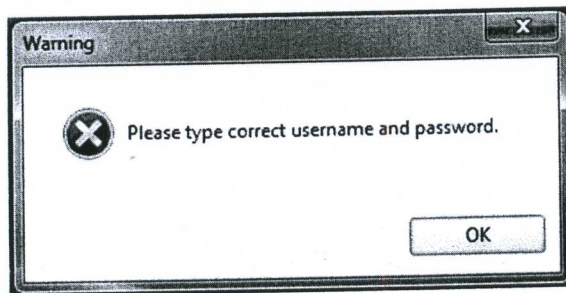
Package	Usage (in Years)	Deduction (%)
Double M	$\geq 02$	05%
Cool Plus 100	$\geq 03$	10%
UPAHARA	$\geq 04$	15%
Active F	$\geq 05$	20%



Write a VB program to input monthly charge, Package, and usage year. And calculate the discounted monthly charge and display on the screen. (Use IF and SELECT CASE structures).

(16 Marks)

d) Write down the code to display the following message box.



(04 Marks)

**(Total: 20 Marks)**

**05.**

a) In ADO.NET programming, briefly write notes on the following.

- i. Binding Navigator
- ii. Table Adapter Manager

(06 Marks)

b) An Access database file named Northwind and a folder named Images for Menus are available on the desktop of the computer.

- i. Write down the necessary steps to connect the database with your windows application. (05 Marks)
- ii. How to view the customers in Detailed view and Grid view. (04 Marks)
- iii. Write down the steps using wizard to create a report for customers to display all fields. (05 Marks)

**(Total: 20 Marks)**