

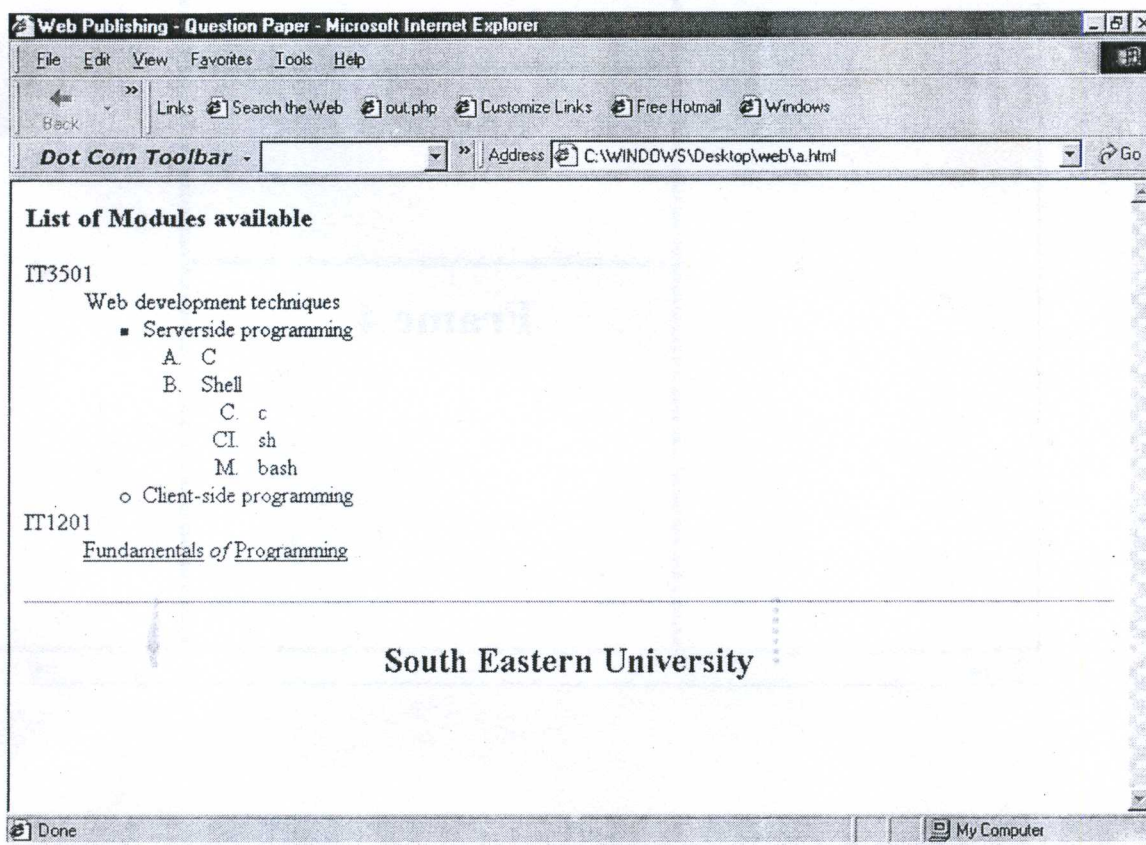
SOUTH EASTERN UNIVERSITY OF SRI LANKA
SPECIAL DEGREE EXAMINATION IN BUSINESS ADMINISTRATION & COMMERCE-
2003/2004 PART II, SEMESTER – I, JUNE / JULY – 2004

MIS 3207 WEB BASED APPLICATION

Answer all questions.

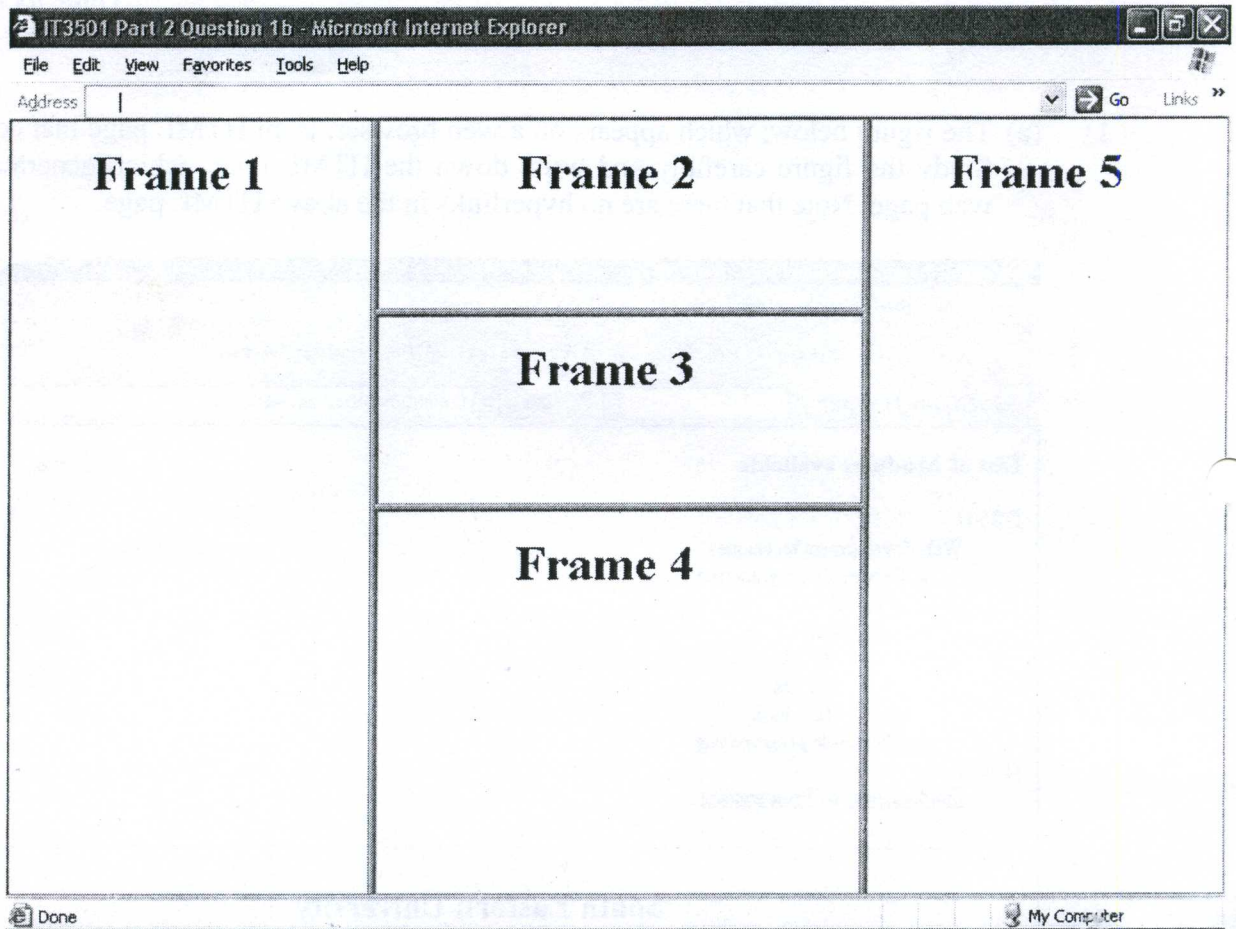
Time: 03 Hours

- 1) (a) The figure below, which appears on a web browser, is an HTML page that contains a list. Study the figure carefully and write down the HTML code, which generates the above web page. Note that there are no hyperlinks in the above HTML page.



(10 marks)

- (b) The figure below is a HTML page with frames. Study the figure carefully and write the HTML code, which generates the above web page. Note that the files displayed in the five frames are f1.html, f2.html, f3.html, f4.html and f5.html.



(5 marks)

- 2) The figure below is a HTML page containing an HTML form and a table. Study the figure carefully and write down the HTML code, which generates the above web page. Note that there are no hyperlinks in the above HTML page. Note that the above form will enable the user to select a course from the list BIT, MSC, PGDipFT and PGDipPT. The topics list contains HTML, JavaScript, PERL and ASP.

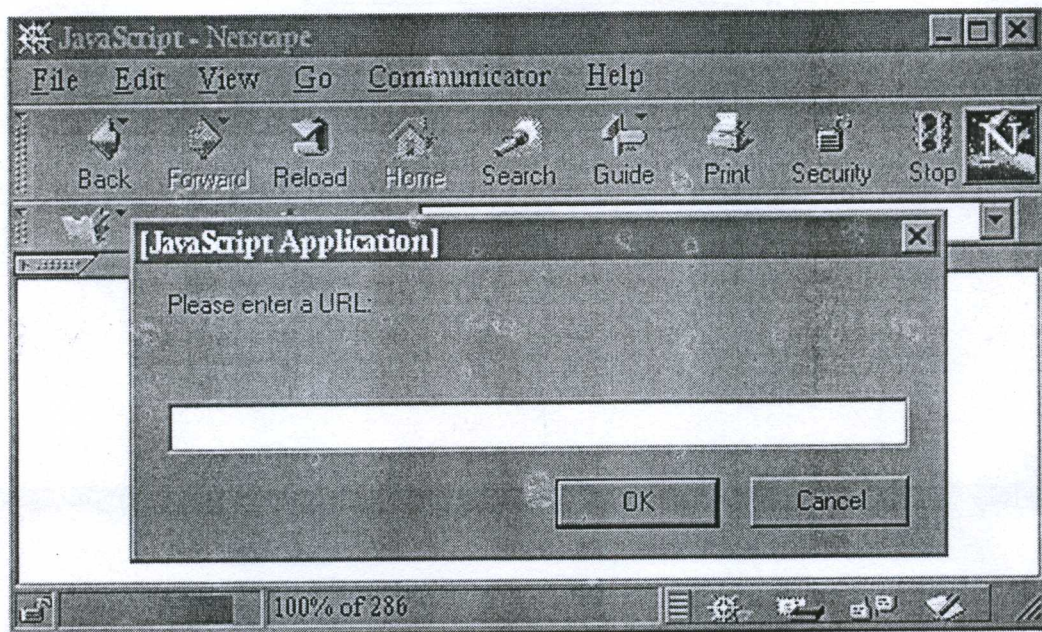
Login	Webdev			
Password				
Course	MSC			
Topics to be Covered	<table border="1"> <tr><td>HTML</td></tr> <tr><td>JavaScript</td></tr> <tr><td>PERL</td></tr> </table>	HTML	JavaScript	PERL
HTML				
JavaScript				
PERL				
Method of Payment Cash <input type="radio"/> Cheque <input type="radio"/>	Preferred time slots 08:00-11:00 on Fridays <input type="checkbox"/> 10:00-13:00 on Saturdays <input checked="" type="checkbox"/>			
clear	post			

(20 marks)

3) Assume that you have an HTML document with a JavaScript embedded in it. When you load this HTML document in to the web browser,

- It will display a dialog box (as shown in figure below) with a message "**Please enter a URL:**" on its body and two buttons "OK" and "Cancel" and a text box.
- If you type a valid URL of a web site on the text box and click "OK", the browser should visit that particular web site.
- If you click the "Cancel" button or if you Click the "OK" button *without* entering any text in the text box, the message "**You didn't enter a URL!**" should appear on the body of the HTML document.

Write the JavaScript code to be included in the HTML document, which achieves the above task.



(15 marks)

Hints:

- Use the "prompt" method and the "location" method and its "href" property.
- Pressing the "Cancel" button of a "prompt" dialog box returns the value "null".

- 4) (i) Identify the primary difference between relative and absolute Uniform Resource Locators (URLs). **(5 marks)**
- (ii) Describe situations in which it is preferable to use relative URLs rather than absolute URLs for referencing resources. **(5marks)**
- (iii) Describe the similarities and differences between client side scripting and server side scripting with respect to browser dependence, database access, response time, authentication, security and script execution. **(5 marks)**
- (iv) Describe the advantages and disadvantages of using client side scripts and server side scripts for data validation. **(5 marks)**

6) The figure shown below is a HTML page with two tables. Study the figure carefully and write down the HTML code, which generates this web page. There is a hyperlink at the bottom of the page, which can be used to link to the "Home Page" of the web site. (File name of the Home Page is "Index.html") (Marks 15)

