

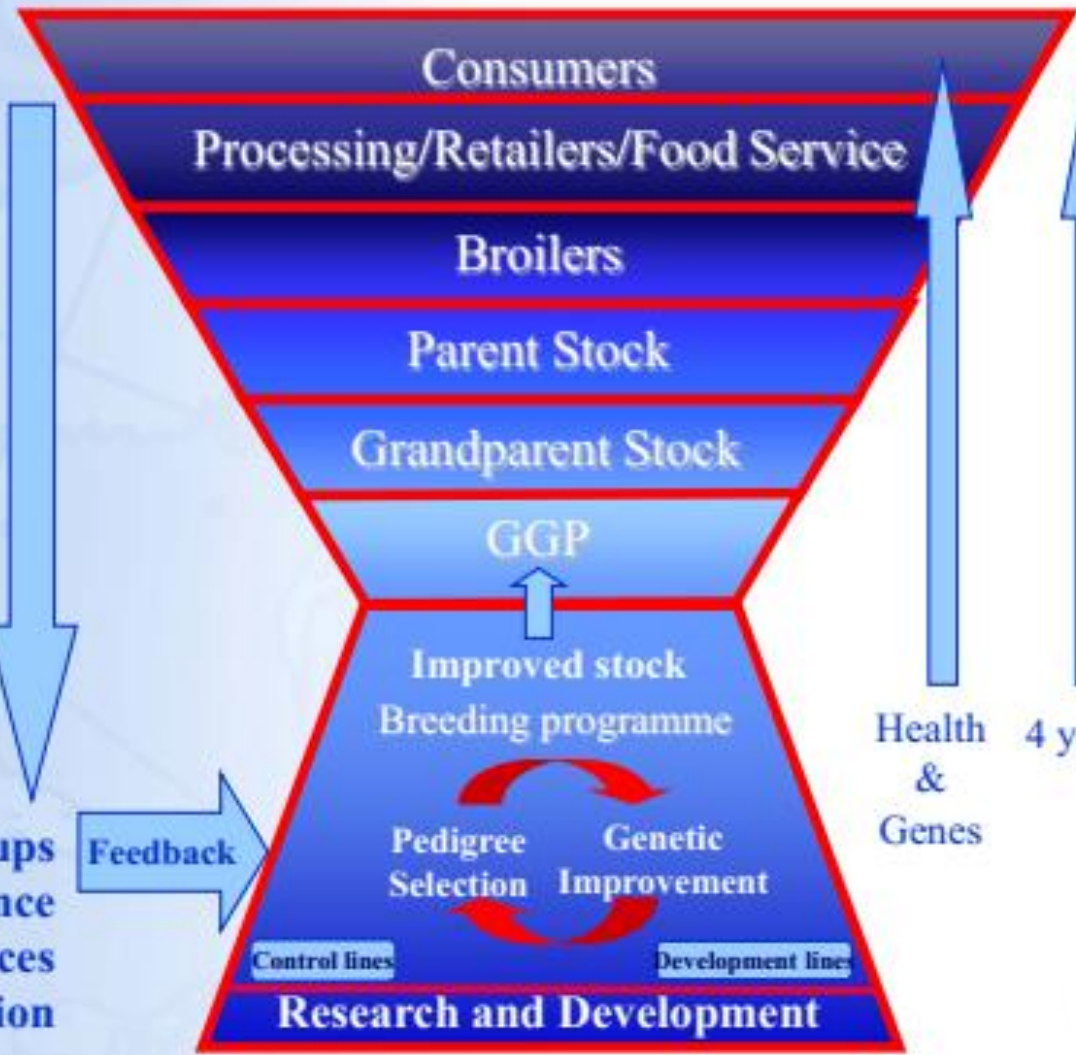
# Poultry breeding

## Commercial strains

- In early 1970's, Sri Lanka has imported some commercial strains for development of the industry.
- A Hybrid of Cornish and Plymouth Rock for broiler production has introduced by department of agriculture under the open economic policy
- Commercial layer and broiler industry totally depend on the imported Grandparent (GP) and parent (P) stocks for breeding.
- Commercial broiler strains - cobb-500, Arbor acres, Hy-line, Indian-River
- Commercial layer strains - shaver, Indian River, Hy-lines

- Few private companies hold the sole power of commercial broiler and layer breeding in Sri Lanka.
- Currently, there are three grandparents breeding farm producing the large-scale parent's birds of Hubbard Classic, Cobb 500 and Indian River Strain
- More than 91% of parent bird requirement is fulfilled by these three main GP farms.
- 33-parent farms buy parent birds from grandparent farms and produce day old broiler chicks for country use.

**The  
Production  
Process**



**Interest groups  
Science  
Resources  
Regulation**

**Feedback**

Health &  
Genes  
4 years



## HOW MEAT CHICKENS ARE BRED IN AUSTRALIA

### IMPORTED FERTILE EGGS

MOST MEAT CHICKENS GROWN IN AUSTRALIA COME FROM **TWO IMPORTED STRAINS - COBB & ROSS**. NEW GENETIC STOCK CAN ONLY BE IMPORTED AS FERTILE HATCHING EGGS, WHICH ARE PRODUCED FROM NUCLEUS BREEDING FLOCKS OVERSEAS. THESE FERTILE EGGS COME IN THROUGH STRICTLY MANAGED QUARANTINE FACILITIES IN AUSTRALIA, WHERE EGGS ARE INCUBATED AND HATCHED.



1<sup>st</sup>  
GEN

THESE CHICKENS BECOME THE NEW COMMERCIAL CHICKEN LINE CALLED THE

### GREAT GRANDPARENTS (GGPs)

USED FOR **BREEDING ONLY**, NOT FOR HUMAN CONSUMPTION. AFTER RELEASE FROM QUARANTINE AT 9 WEEKS OF AGE THE GGP'S ARE MOVED TO BREEDER FARMS, REARED AND MATED TO PRODUCE FERTILE EGGS.



THE CHICKENS THAT HATCH FROM THESE EGGS ARE THE...

2<sup>nd</sup>  
GEN

### GRANDPARENTS (GPs)

GENETICALLY DIFFERENT MALE AND FEMALE LINES ARE CROSSED...



PRODUCING THE NEXT GENERATION OF BIRDS...

3<sup>rd</sup>  
GEN

### PARENT BREEDERS

FROM THE PARENT BREEDERS' FERTILE EGGS...



THE FINAL GENERATION IS HATCHED...

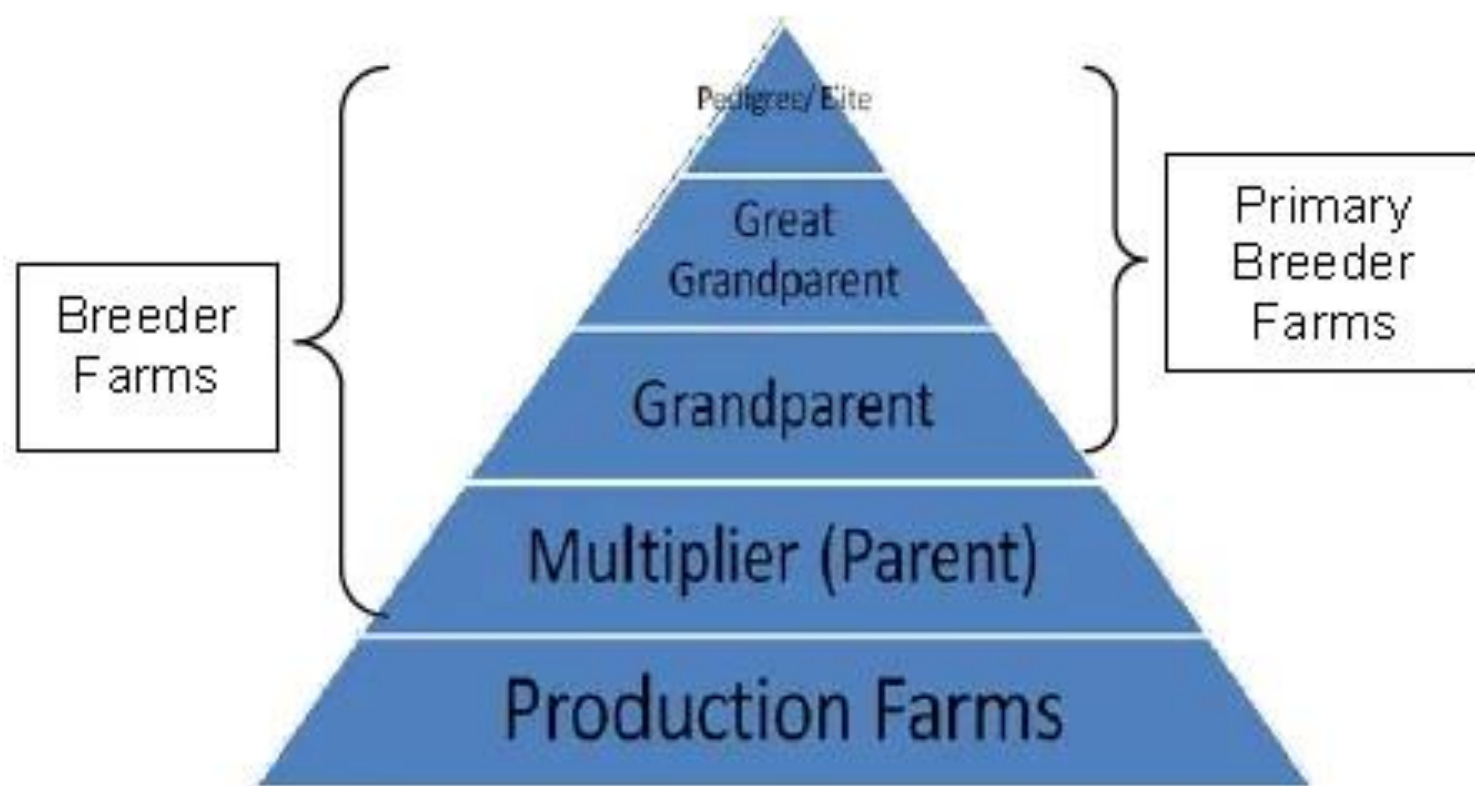
4<sup>th</sup>  
GEN

### MEAT CHICKENS

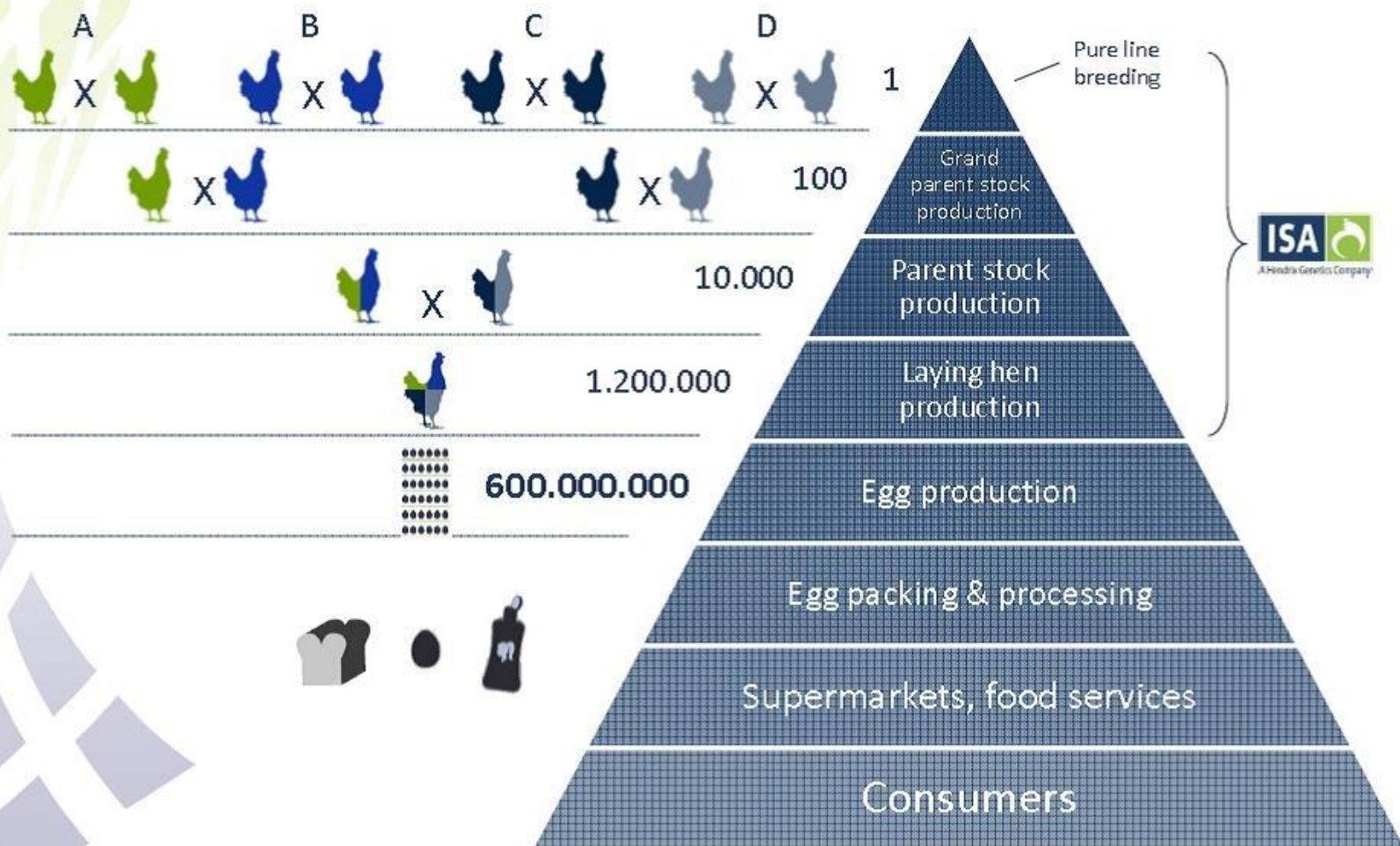
GROWN FOR EATING.



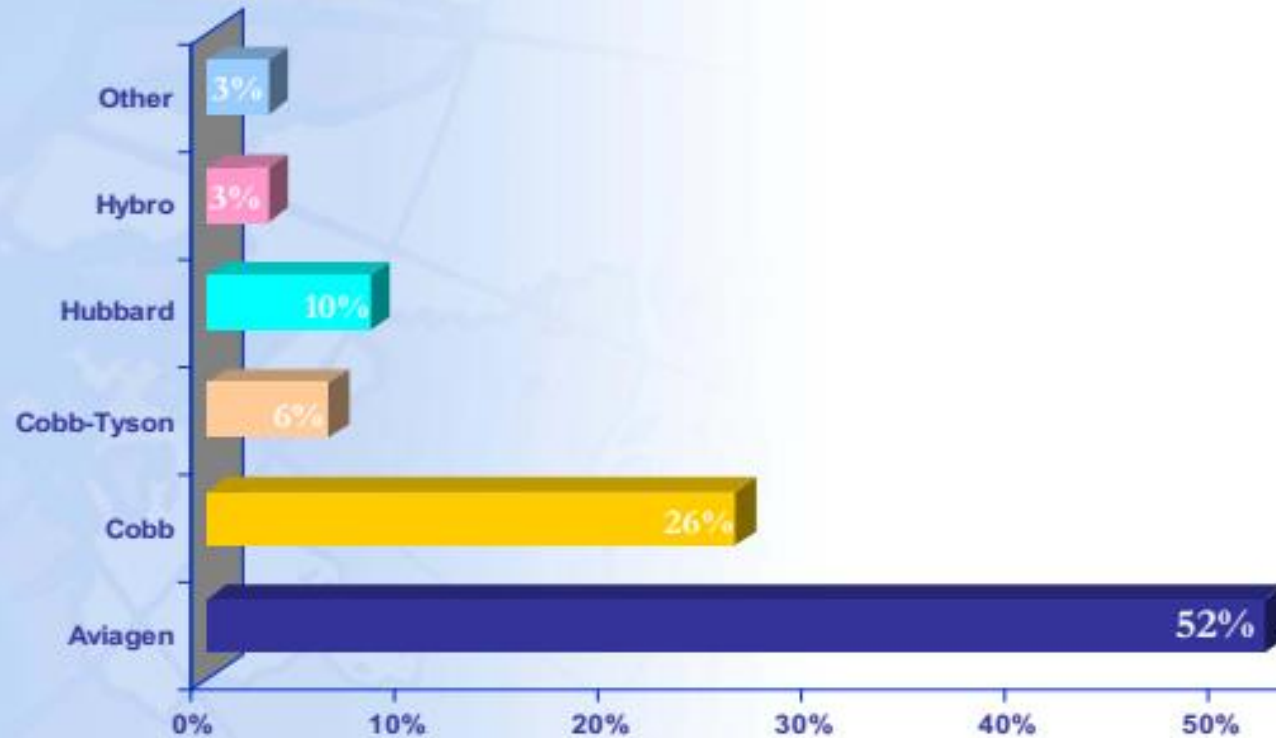
**Figure 3. Structure of breeder farms in the United States**



# Egg Production Supply Chain in 2020 !



# Current Global Market Shares



Total World PS Market- 379 million

